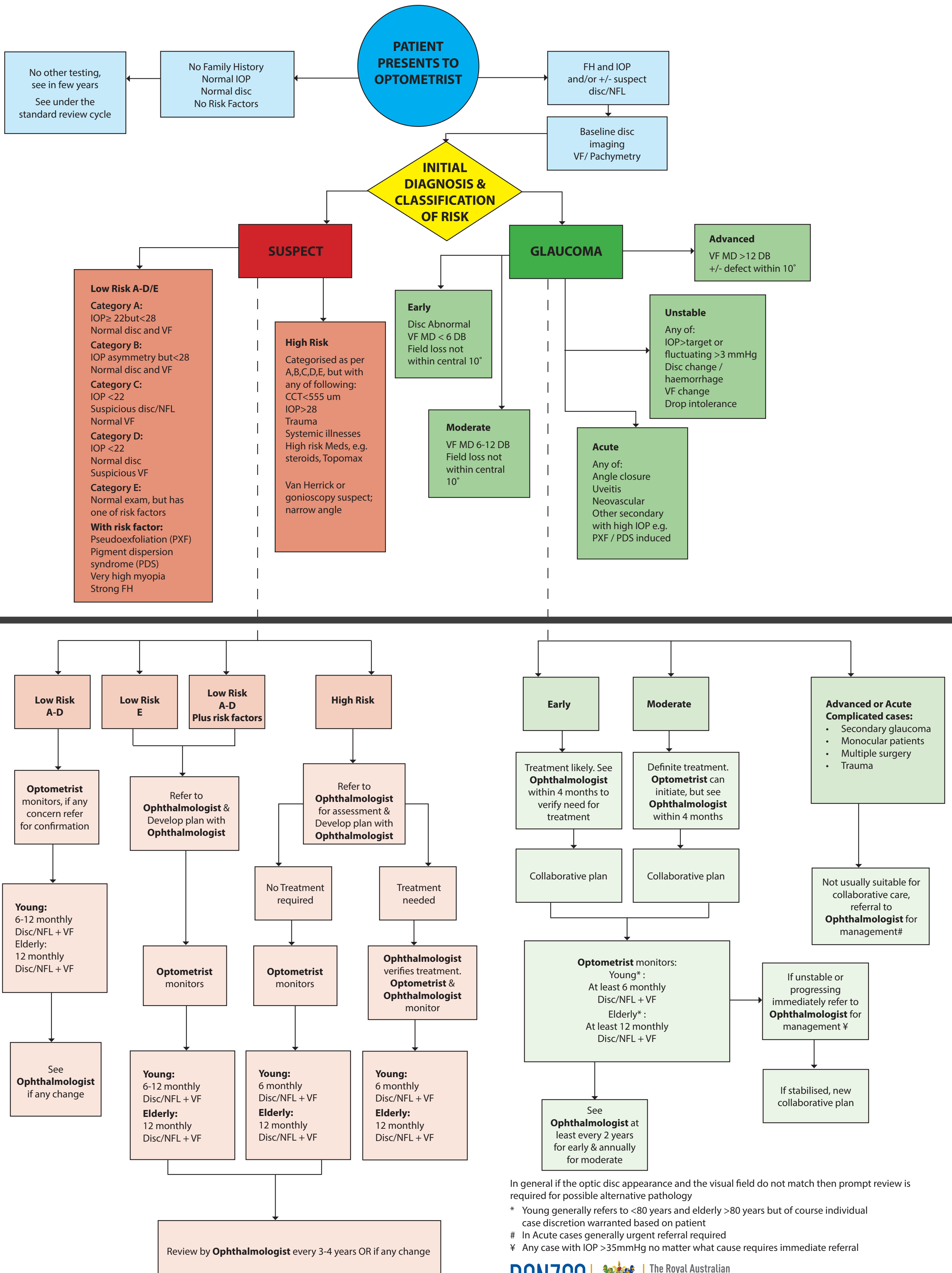


RANZCO Referral Pathway for Glaucoma Management



In general if the optic disc appearance and the visual field do not match then prompt review is required for possible alternative pathology

* Young generally refers to <80 years and elderly >80 years but of course individual case discretion warranted based on patient

In Acute cases generally urgent referral required

¥ Any case with IOP >35mmHg no matter what cause requires immediate referral